





Feasibility of Implementing High-Impact Nutrition Standards in Family Child Care Homes – New Study Results



We have been taking a bite out of hunger since 1992





We are a statewide policy and advocacy organization dedicated to improving the health and well-being of low-income Californians by increasing their access to nutritious, affordable food.






Agenda


1. Background for the pilot
2. Evaluation results
3. What is next?



Why child care?

-  ~11 million children under age 5 in some form of child care.
-  Average = 35 hours/ week.
-  A significant portion of nutrition is consumed in child care.

4

California Food Policy Advocates 

Why child care?

- About 21% of children live in poverty.
- Poor nutrition affects young children's ability to learn and grow. Nutrition habits formed early.
- Diet related disease is on the rise.


5

California Food Policy Advocates 

Child care centers and family child care providers play an integral role in shaping the health and development of young children.



They are also a safety net for the children in their care.

California Food Policy Advocates 


The state of child care

Major Budget Cuts

Funding for subsidized care

\$700 million


below pre-recession investments



Inadequate Access

Child Care Food Program in 2016:

Only **1 in 3** child care centers




Just over **half** family child care homes

Declining Participation

3000 to 2015

20,000 fewer children participating each day in the Child and Adult Care Food Program



California Food Policy Advocates 

Setting nutrition standards is one way to ensure all child care settings can help children grow up healthy.



Unlike center-based care, licensed family child care homes in California are not expected to meet any nutrition standards, unless they participate in the CACFP.

California Food Policy Advocates

INSTITUTION POLICY INSTITUTE
NPI

Impact Highlight:
In 2010 AB 2084 established nutrition standards for beverages in child care

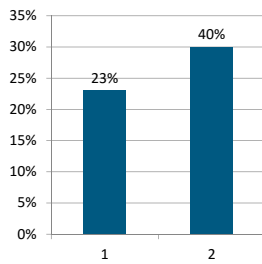
food4all means healthy beverages in child care



California Food Policy Advocates

INSTITUTION POLICY INSTITUTE
NPI

How the policy translated to practice:



Category	Compliance Rate
1	23%
2	40%


Overall compliance with beverage standards

California Food Policy Advocates

INSTITUTION POLICY INSTITUTE
NPI

AB 1872:
Would have required all child care settings to follow nutrition standards for meals and snacks served in licensed child care.

food4all means healthy meals and snacks in child care



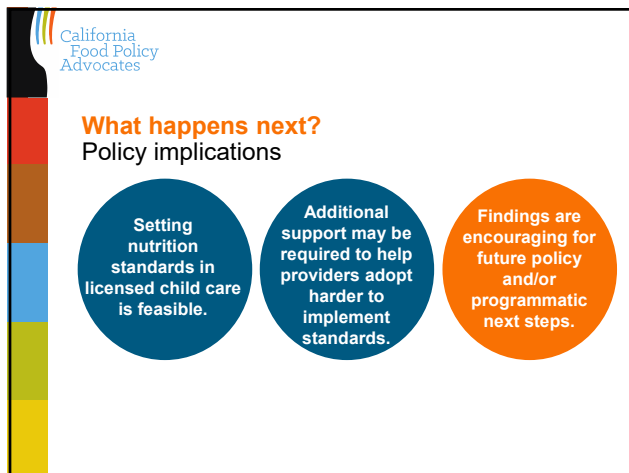
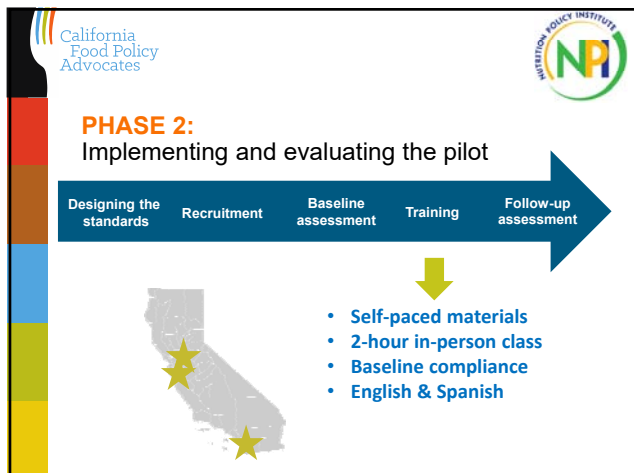
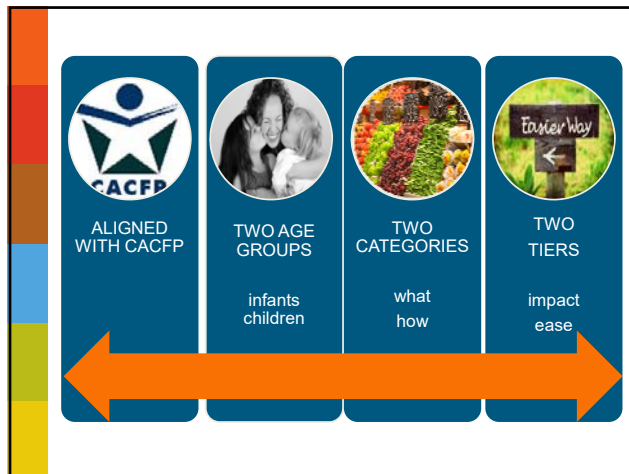
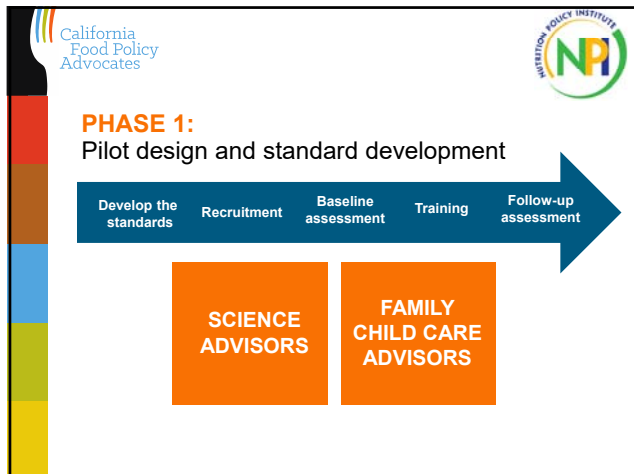
California Food Policy Advocates

INSTITUTION POLICY INSTITUTE
NPI

A pilot was launched to learn how nutrition standards can be used to support children in child care while also strengthening the viability of the child care workforce.

Pilot sites:

- San Joaquin County
- Santa Clara County
- San Diego County





Connect with us

Join our mailing list:
www.cfpa.net/subscribe

Find our advocates:
www.cfpa.net/contact-us

Follow us on twitter:
[@cafoodpolicy](https://twitter.com/cafoodpolicy)

Like us on Facebook:
[@CAFoodPolicy](https://www.facebook.com/CAFoodPolicy)

The graphic features a stylized map of California on the left side, with a dark grey background. On the right side, there is a light blue background with a white silhouette of a person's head and shoulders. The text "California Food Policy Advocates" is written in blue next to the silhouette. A rainbow-colored arc is positioned above the text.